

An artistic illustration featuring a dark brown wooden post on the left. A heavy metal chain with large links hangs from the post. To the right, there are several large, vibrant green leaves with detailed vein patterns, some showing signs of being eaten. The background is a soft, textured blue sky with light, wispy clouds. The overall style is painterly and detailed.

Creative Highlights By
Serena Bales

designsbysserena.com

**ILLUSTRATION
FINE ART**

Serena
2016

PRODUCT ILLUSTRATIONS



Acrylic on canvas



Acrylic on canvas



Pen and Ink on Illustration board



Gouache on illustration board

PRODUCT ILLUSTRATION



Pen and Ink on Illustration board



Watercolor on illustration board



Marker and color pencil

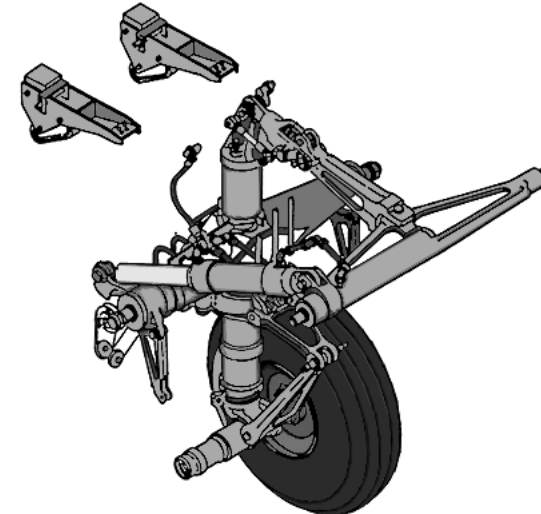
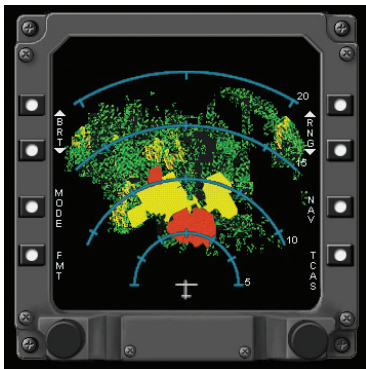
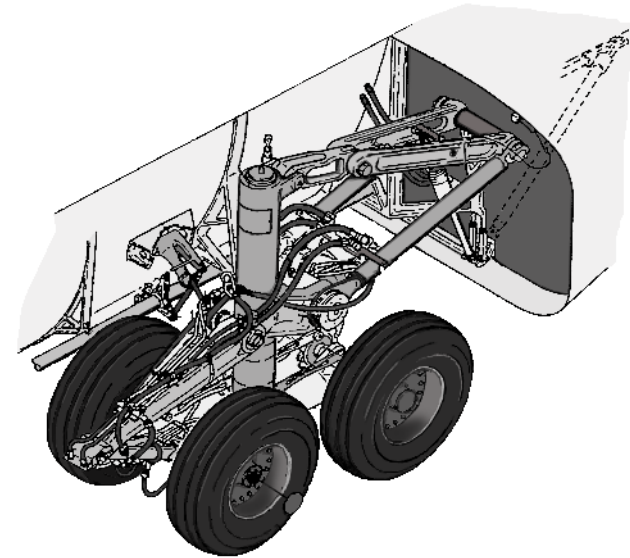


Pen and Ink on Illustration board

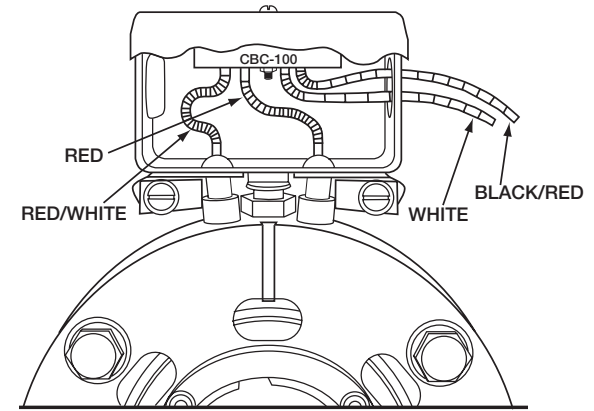
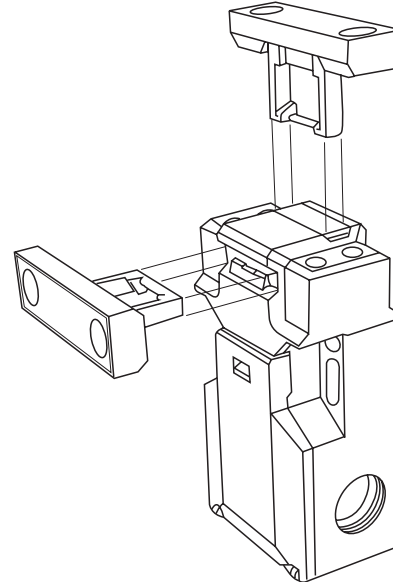
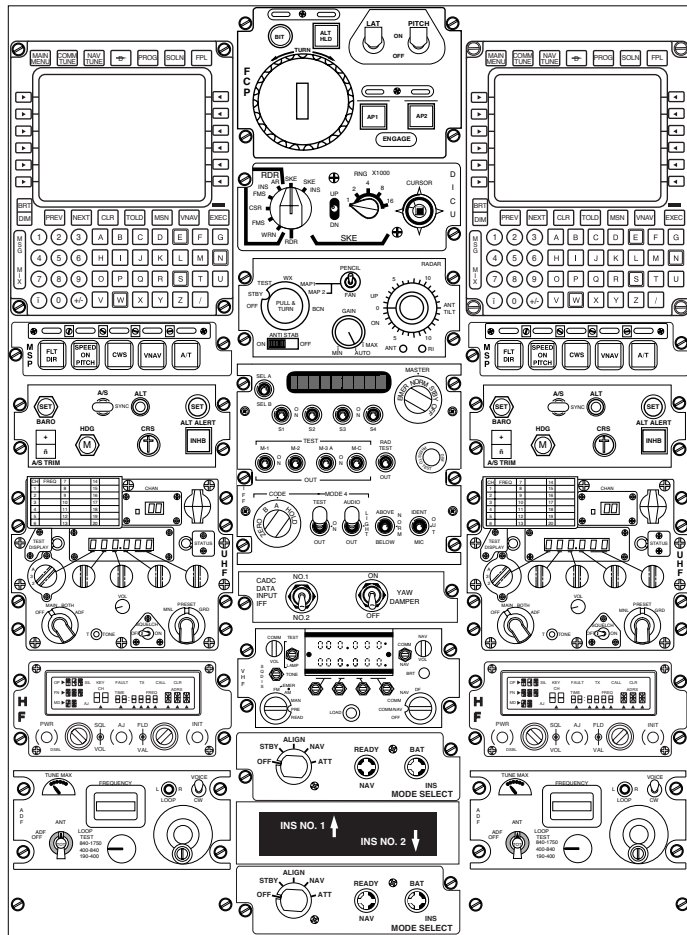


Acrylic on canvas

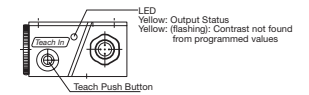
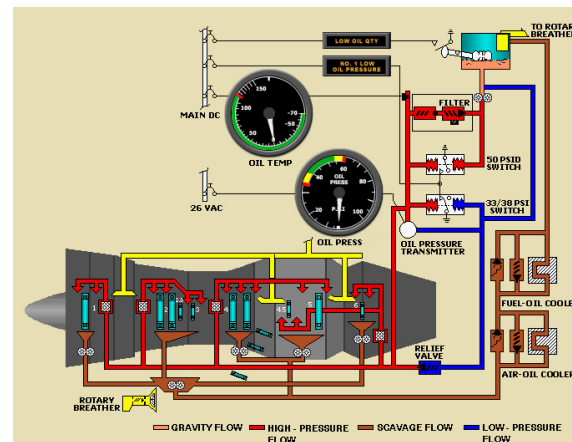
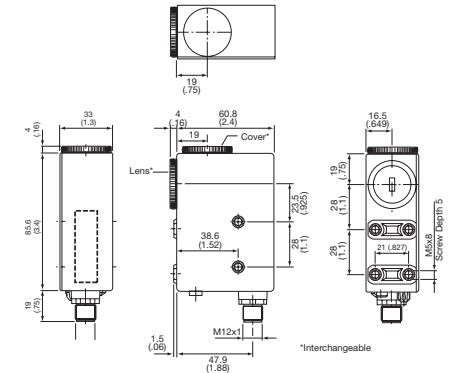
TECHNICAL ILLUSTRATIONS



Technical illustrations
created in Illustrator
and Photoshop



Technical illustrations created in Illustrator



FINE ART/ILLUSTRATIONS - PEOPLE



Charcoal on vellum



Pencil on vellum



Pencil on paper



Marker and color pencil



Pencil on canvas



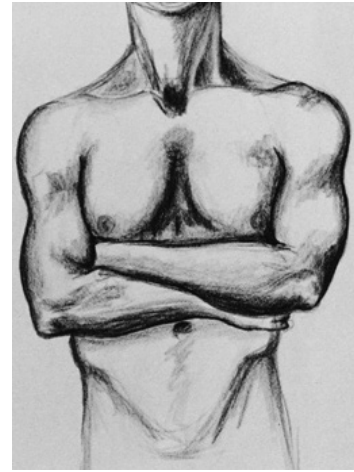
Pencil on coquille paper



Charcoal on paper



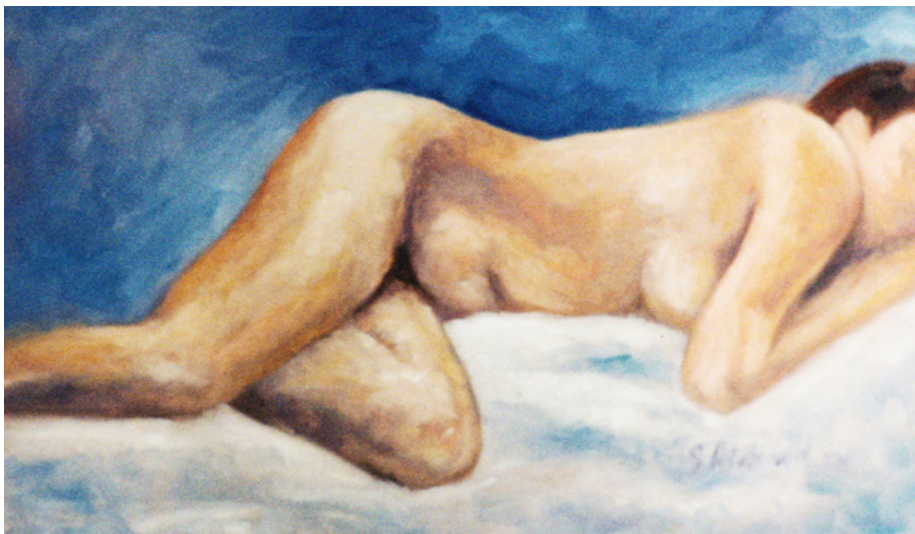
Pencil on paper



Pencil on paper



Charcoal on paper



Oil on canvas



Charcoal on paper

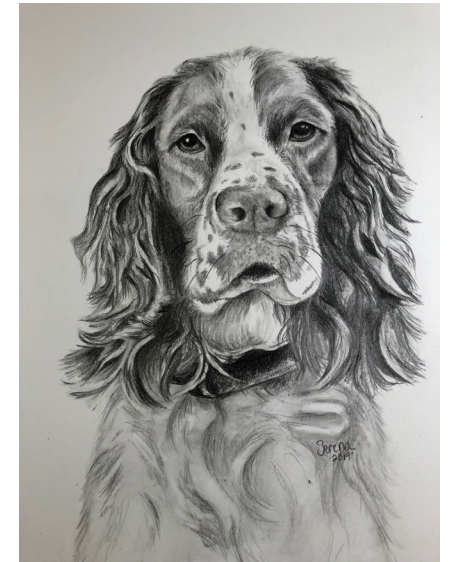
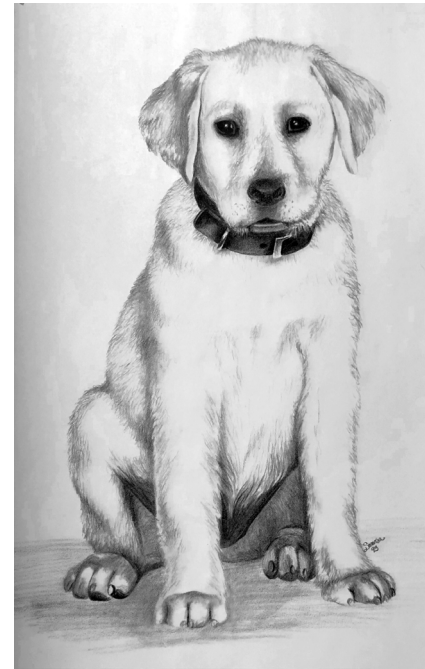
FINE ART/ILLUSTRATIONS - ANIMALS



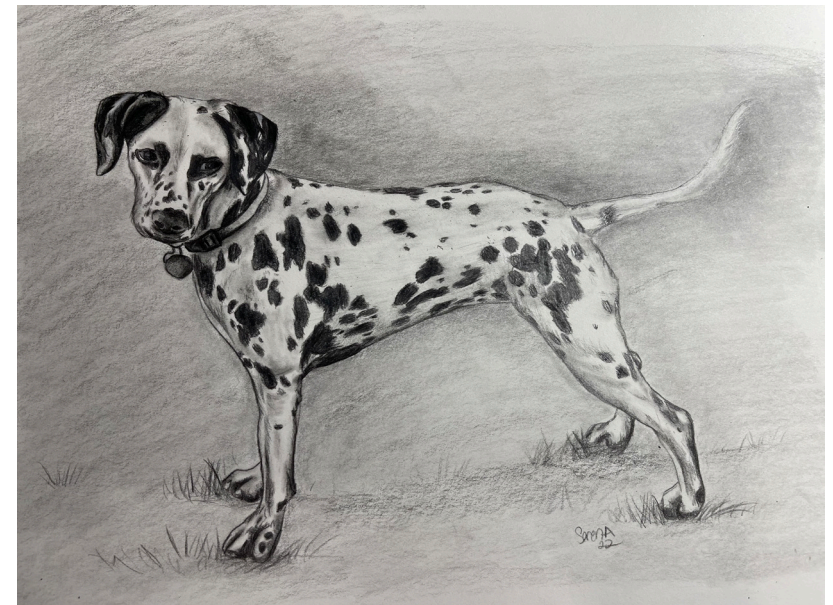
Oil paintings on a cast iron pans, canvases, wood cutting boards, and wood box for a number of clients.



FINE ART/ILLUSTRATION - ANIMALS



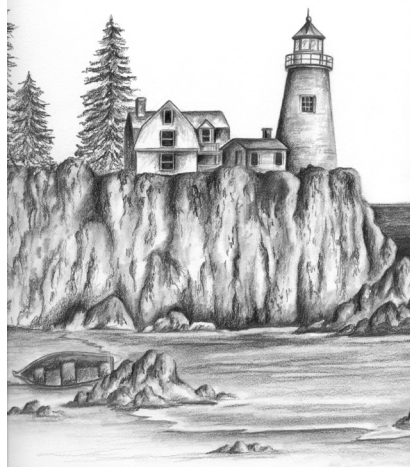
Pencil drawings on paper



FINE ART/ILLUSTRATIONS



Oil on canvas



Pencil on paper



Oil on pizza board



Oil on metal saw blade



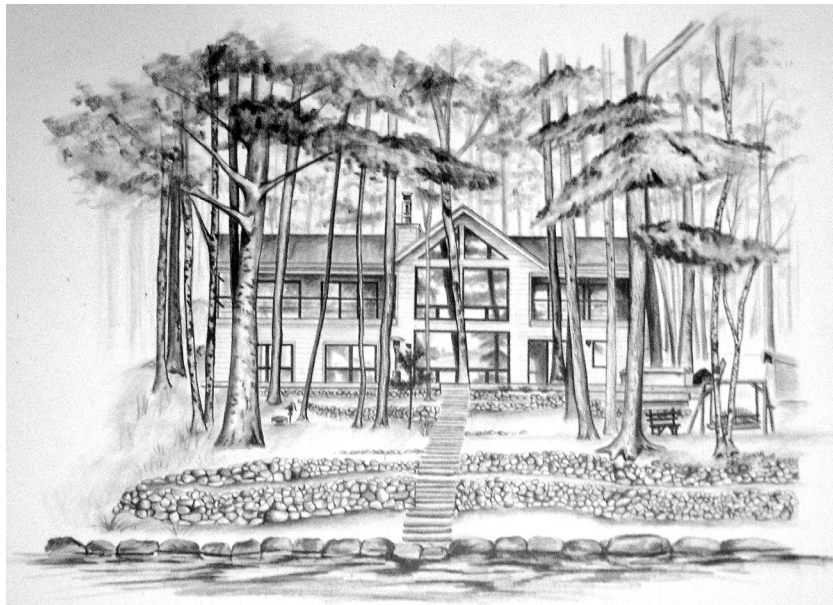
Watercolor on illustration board



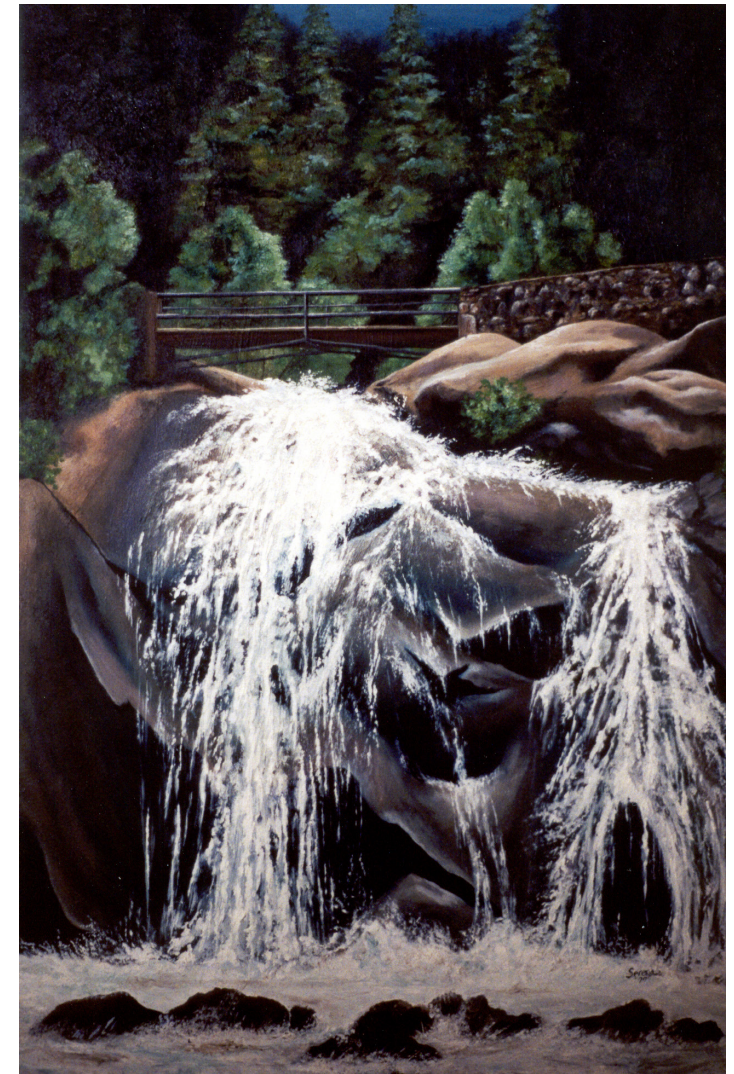
Acrylic on canvas



Oil painting on a metal saw blade. I did this painting for a client of their old cabin and the new cabin. I used their photo references to create this painting. This is hanging up in their new cabin

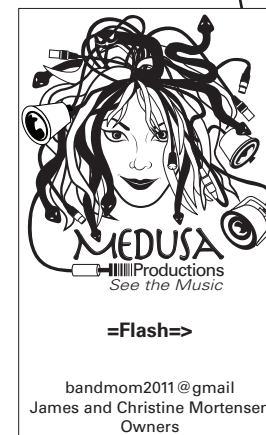
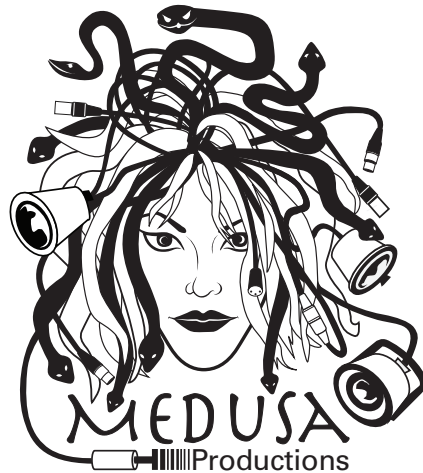
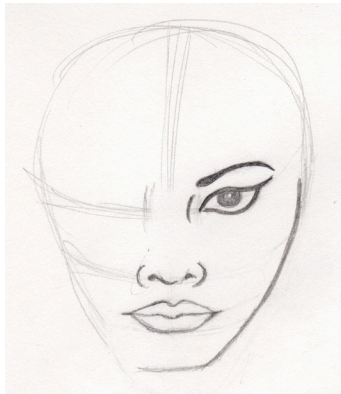


Loose pencil drawing on paper of a clients cabin.



This is an oil painting of "Helen Hunt Falls" in Colorado Springs. I did a series of photos and drawings before creating this painting. I did this so I could try out different techniques for the water and rock textures. I use this as a sample of my creative ability.

LOGO DESIGN USING ILLUSTRATION

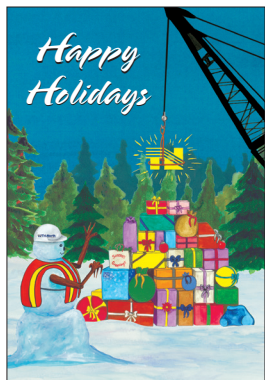


Business Card

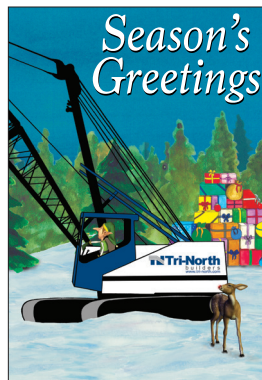


Final Logo

This client was a lighting production company that worked with a local band. They came to me come up with an illustrative Medusa logo for their company. They requested that the logo would use lighting cords, lights, and snakes. I first started with researching of the different illustrative Medusas and then sketched out the face and hair to get a basic shape. After coming up with many renditions of the hair using the lighting and snakes, I started to work with some negative space by outlining elements within the hair to give it texture and depth. My clients were very happy with the outcome of their logo.



2008



2009



2010

Created a company Christmas card in 2008 for Tri-North Builders. I started out by creating the background as a watercolor painting and decided to continue it with the presents and snowman. The crane is a pen and ink drawing that I did a few years back. I scanned each piece of artwork and created a working document in Photoshop. In 2010 I added the bobcat and trailer and both were created in Illustrator and then brought into Photoshop. The reference photos for both the bobcat and job trailer were taken from the shop's bone yard. The rock and pond were created in Photoshop. All the elves and the deer were purchased from BigStock stock photos. After the first card was created and was such a success I was asked to continue the story for the following two years. 2008 and 2009 Christmas cards were printed by a local printer and the 2010 was used as an email blast by Creative Company for Tri-North.



Serena Bales
865 Clover Lane
Oregon, WI 53575
608.501.9004

serena@designsbyserena.com

designsbyserena.com

Serena
2008